

**Our other Range
of Products & Systems**



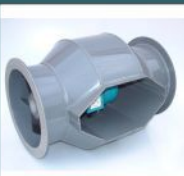
Axial Flow Fan



Centrifugal Blower



Natural Turbovent



BIFURCATED FAN



Air Washer/ Air Cooling Unit



Wet Scrubber



Dust collector



Our Eminent Clients

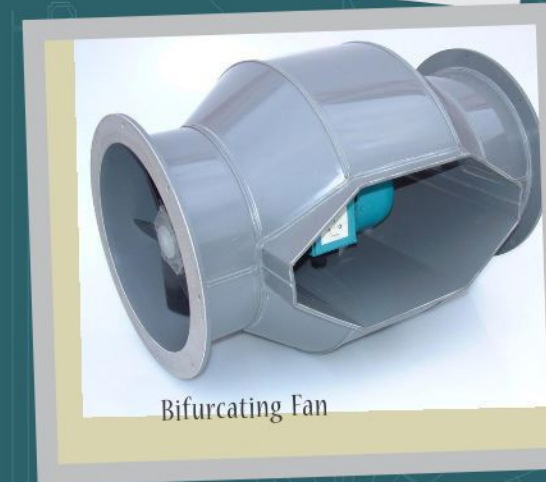
 I.T.C. Limited	 emPowering People	 RADICO KHAITAN LTD.	 SUN PHARMACEUTICAL INDUSTRIES LTD.
 PAHARPUR A GROUP COMPANY	 HAVELLS	 MSE Motherson Sumi Systems Limited	 Nirula's
 Supreme People who know plastics best	 Hindustan Unilever Limited	 moserbaer™	 NEW HOLLAND AGRICULTURE
 parag	 JUBILANT ORGANOSYS ScienceActive	 RANBAXY LABORATORIES LIMITED	 asianpaints



Axial Flow Fan



Man Cooler



Bifurcating Fan



Roof Extractor

The Leaders In
Axial Flow

Fans in Industrial Fan, Air Pollution & Ventilation Applications

Axial Flow Fans

Aero Tech Axial flow fan are used for providing general ventilation, fume exhaust and removal of hot spots and can be as roof extractor & bifurcated fans.

Type :

- General Ventilation purpose
- Fire rated application & smoke exhaust

Duties :

Aero Tech axial flow fans are specially manufactured for all application and mounting positions incase sizes 500 to 1600 mm diameter. the performance range is from 1000 to 150000 m3.h on air volume, at static pressure up to 1500 pa (150mm wg)

Driving Arrangement :

There are two types of drive - the direct drive arrange mentor v-belt drive arrangement. we can provide coupling drive arrangement on request.

Energy Efficient Blade :

Aero Tech has developed a Energy Efficient Series Fans of GRP Material to save the power up to 10% of the conventional fan impellers. These impellers have adjustable pitch blade (10 to 40 Deg.) and Operating temperature range from -40 to 110 Deg Cel. Max. & Efficiency 86%.

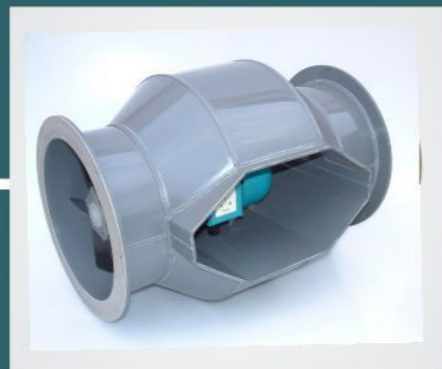
Casing :

The casing is fabricated from mild steel sheets & plates and fitted with flanges on both the ends. fans are available in following mounting arraignments.

Motor :

the standard A.C Motor are totally enclosed fan cooled (TEFC), Squirrel cage induction type suitable for ambient temperatures up to 40 degree C, Flame proofs, Vapour tight and other motors like class Hand high temperature motor can be supplied on request.

Applications - General Ventilation - Parking ventilation Fume Exhaust - tunnel ventilation.



Bifurcating Fan :

Bifurcating Fan with Aluminum/GRP Blade. Normally used for High temperature & dusty air/fumes. The Drive motor gets ventilation from a different chamber (usually exposed to atmosphere).The process air is generally ducked at both ends of fans and travels without striking electric motor. A drop in efficiency of around 25% is to be reckoned for such selections.

Applications -

General Ventilation for Parking ventilation, Fume Exhaust for tunnel ventilation, Removal hot spots for Generator ventilation, As roof extractor for Air conditioning , As bifurcated fans for humidification, Basement ventilation for In line application, Kitchen Exhaust for Man Cooler etc.

Roof Extractor :

The roof extractor is a motor driven fan unit having cast aluminum alloy impeller, airfoil section blades and is provided with durable weather proof exhaust cowl.

This is ideal for extraction of air supply through the roof, usually preferable in factories power plants, steel plant and foundries

Discernible features:

- Fan Size : 500 to 1500 mm.
- Flow rates up to 100000 cmh.
- Pressures up to 600 pa.

Application :

Find application in extraction of air supply through roofs/ridges in industrial building, factories, power plants, steel plants, foundries etc.



Man Coolers :

Man Coolers are designed to provide high Air Volume discharge with high velocity and for long distance sweep. Man cooler can be used in various applications such as hot furnaces, Drier Annealing furnaces, cooling the electrical equipments, for general comfort and proper ventilation in the shop floors.

'Aero Tech' Man Coolers are available in two types :

- Pedestal type
- Tubular type.

Pedestal Type :

These type Man Coolers are designed to place on the shop floors. The cast aluminum alloy, statically and dynamically balanced impeller of high efficiency Aerofoil Section blades is mounted directly on the motor shaft with suitable, sturdy protection guards and mounted on the steel pipe with motor base plate. The cast iron solid base holds the assembly on the floor free from Vibration The Air throw can be adjusted vertically for various positions. Castor wheels can be provided for the special application on specific request.



Tubular Type :

In this type of Man Coolers, the impeller and Motor Assembly is mounted in the circular casing with suitable stand arrangement. This can be moved from place to place easily even in rough floor areas. The Air flow can be adjusted vertically for any convenient Position. Necessary protection guards are also provided on both sides of the casing. Technical Specification for Industrial Heavy Duty Type Man Cooler.

Application :

'Aero Tech' has included Man Cooler in it's product range to facilitate the shop floor in the industries to provide a better environment for their employees which in turn results by the increase in production.

