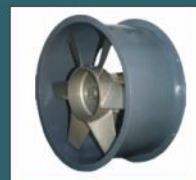


Our other Range
of Products & Systems



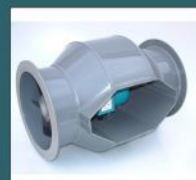
Axial Flow Fan



Centrifugal Blower



Natural Turbovent



BIFURCATED FAN



Air Washer/ Air Cooling Unit



Wet Scrubber



Dust collector



Products : Centrifugal Blowers , Axial Flow Fans, ID-FD Fans, Roof Extractor, Mine Ventilation Fans, Dust Collectors, Wet Scrubbers ,Cooling Units etc

Projects : Centralized Cooling Systems , Plant Ventilation, Dust Collection, Paint Shop Pressurization, Air Pollution Control Systems , Kitchen Exhaust & Ventilation, Fume Exhaust Systems...

Our Eminent Clients



Aerotech Equipments & Project (P) Ltd.

Manufacturer of Blowers & Fans, Design Engineers & Contractors of H.V.A.C.
Plot No.189, Ecotech Extn 1, Surajpur Kasna Road, Greater Noida, Distt. G.B. Nagar- 201 310 (U.P.)
Mob. : +91-9810162210, 9718893666, 9310162210
E-mail : aerotechfans@gmail.com ; aerotechblowers@gmail.com
Web Site : www.aepl.com

An ISO 9001:2008 Company



Evaporative Air Cooling Unit

The Leader...
in Industrial Fan, Air Pollution & Ventilation Applications

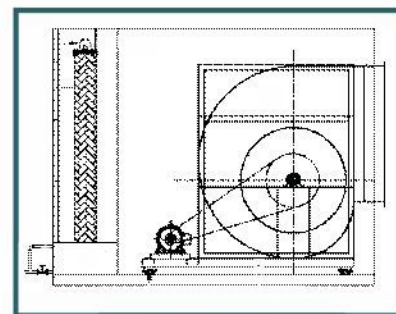
Concept of Air Cooling :

Evaporative air cooling systems are designed to meet today growing demand for increased sensible cooling with extremely low energy consumption. This media and spray type cooler provides the most universal high saturation efficiencies available with evaporative cooling today. Whether they're used to cool an entire facility or simply to spot cool the specific areas. Its used in industrial, institutional, commercial, residential, agricultural etc.

Its is constructed in a wide choice of design, capacities & materials. Its capacity from 5000 CMH to 2,50,000 CMH air quantity and static up to 75 mm of wg using axial or centrifugal fans are available in plastic, GI, MS, FRP and stainless steel 304 construction.

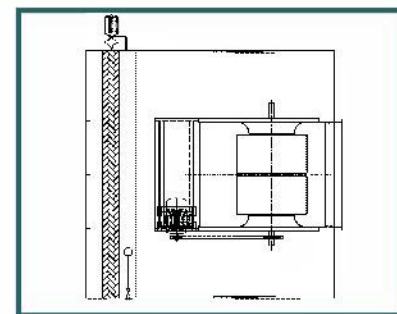
Comparison Between Air Cooling and Air Conditioning :

Evaporative Air Cooling	Air Conditioning
1- Introduces 100% fresh air 2- Windows and doors left open 3- Keeps the air moist, great for allergy and asthmatic conditions. 4- Full ventilation exhaust outdoors, germs. 5- Increased cooling capacity as outside temperature rises 6- 70% less then the insulation costs of air conditioning. 7- 90% less the running costs of air conditioning.	1- Re-cerulates the same stale air 2- windows and doors mustbe shut. 3- Reduces the moisture, which can be lad for asthma and allergy sufferers. 4- Re circulated efficiency and capacity as outside temperature rises. 5- Reduce efficiency and capacity as outside temperature rises. 6- Costly installation 7- Higher running costs



SIDE VIEW

G.A. Layout of Air Washer



TOP VIEW

Salient Features' of Single Skin & Double Skin

Features	Single Skin	Double Skin
Corner Sheet Metal	Cast Iron 16 G. G.I.	PVC 24 G.I. - P.P. Sheet Outside 24 G.I. GI Inside
Insulation	No Insulation	Puf Insulation CFC Free
Base Tank	75/100mm C Channel MS / SS	75/100 mm C Channel MS / SS
Filter Frame	G.I. / Aluminum	G.I./Aluminium
Vibration Isolator	Cushy Foot Mounting	Cushy Foot Mounting
Fan	Centrifugal Fan-Forward Curved/Backward Curved	Centrifugal Fan-forward Curved/backward Curved
Cooling Media	Cellulose Pad	Cellulose Pad
Air Discharge	Horizontal/vertical	Horizontal/vertical
Air Washer Placement	Ceiling Suspended/foot Mounting	Ceiling Suspended/foot mounting

Main components which makes air cooling/air washer most efficient among other competitors/manufactures

The Cabinet :

Aero Tech Air Washer made in single skin or double skin cabinets/ housing.

Features :

Base: The total assembly is mounted on a horizontal member of heavy galvanized steel channel for joining them together with lifting holes on all corners.

The Panels - We have special software to design the panels for standard air Washers, to suit the The Panels are fixed to the rugged frame work made of aluminum section/G.I. section with Cabinet is airtight using self adhesive tapes and gaskets.

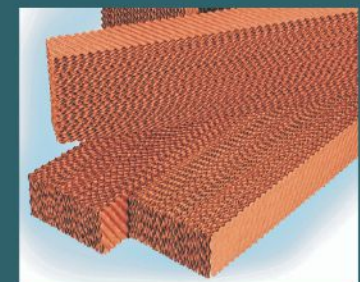
Inspection Windows / Doors :

Aero Tech Air Washers have proper accessibility for regular maintenance through hinged se



Cooling Media Cellulose Pad :

Cooling Pad made of cellulose paper, specially treated media capable of absorbing and retaining water to provide the maximum cooling efficiencies. The saturation efficiency ranging from 50 to 98%, can be achieved depending upon air velocity (1m/s to 3.5m/s) and depth (200mm to 700mm) flute height 6.5mm. The water is collected below the bottom of the pad and is re-circulating again by a pump through the unique distribution system. The equipment is designed to maintain room temperature around 28-32 Deg. Cel. and 60-65% RH.



Filters :

The standard pre-filters are made of G.I./Aluminium construction having efficiency 90% down to 30 micro. Depends on application the fine filters of various efficiencies also can be provided.

Water Tank :

The water tank is made of mild steel or stainless steel with anti corrosive coatings (FRP/EPOXY) and are designed for easy access for periodic cleaning.

Pipes & Pipe Fittings

The pipe and other fittings like gate valve, Y-stainers, float valve are of reputed make or of imported origin.

The Fan Motor & Drive Set :

Aero Tech offers fan in forward and backward curved design, statically and dynamically balanced with low noise levels and high efficiency from 300mm dia to 2000mm dia. The fan & motors are mounted on MS channel/G.I. fabricated slide rails with provision of easy belt tensioning. The complete assembly is mounted on spring/rubber vibration isolators for smooth performance. The fan is connected to the main casing, using fire and moisture resistant flexible canvass connection, ensuring low operating noise and vibration. The drive pulleys are taper bushed duly balanced with proper sized 'V' belts.

Accessaries:

Aero Tech air washer features can be enhanced by using various optional accessories as per below:

- Intake louver with bird screen.
- Fan outlet dampers.
- Fine filters with extra stretched cabinet.
- Drift Eliminators in PVC/Aluminium/G.I.
- Micro processor based control panel with sensors.
- The safety switches and indicators.